

AUSTRALIAN H.M. CUSTOMS CLEARANCE SEALS

The 1899-1930 Customs Seals of the Australian States and it's Commonwealth.

Dave Elsmore RSRM



CONTENTS

Preface	2
Ports of Entry	3
Colour Trials	4-5
Accepted Colour Proof	6
First Series	7
First Series Second Issue	8
Second Series	9-11
Third & Fourth Series	12-13
Fifth Series	14
Sixth Series	15
Seventh Series	16
Eighth Series	17
Acknowledgements	18

PREFACE

This is the first philatelic study of the Australian States and Australian Commonwealth Customs Clearance Seals for some 120 years, neglected by just about every philatelic student till now!

History

The Department of Trade and Customs was formed 1 January 1901 as one of the first seven Commonwealth Departments of State. On 4 July 1901, The Honourable Charles Kingston announced that Dr. Harry Wollaston would be appointed the first Comptroller-General of Commonwealth Customs. The Customs Act 1901 received Royal Assent on 4 October 1901 as the sixth Act of Federation, giving Customs legal powers to enforce tariffs, duties and excise. Prior to this, each Australian State was responsible for its own Custom Duties, via each of the States Customs Houses.

Referred to as Customs House and Brandy Exide Seals. New South Wales was the first Australian State to order 'H. M. Customs Clearance Seals' on 14 March 1899 by the Collector of Customs. [job 99/D1208]. Used to officially seal Customs related instruments as a security device to prevent fraud.

The Power House Museum in Sydney has imperf proof colour trials in purple, mauve, light and dark brown and two shades of red. Also a Sydney and a Newcastle perforated and gummed, manuscript "Cancelled" examples.

After 120 years, it is time to finally start this work.

Dave Elsmore

January 2021

Ports of Entry

It is unclear as to whether all ports issued seals or not as records have not survived. Seals recorded here are from the author's database.

New South Wales:

Coffs Harbour, Eden, Lord Howe, Newcastle, Norfolk Island, Port Kembla/Wollongong Sydney.

Northern Territory:

Darwin, Gove.

Queensland:

Brisbane , Bundaberg, Cairns, Gladstone, Mackay, Southport (Gold Coast), Thursday Island, Townsville. Weipa.

South Australia:

Port Adelaide, Port Lincoln.

Tasmania:

Burnie, Devonport, Hobart, Launceston

Victoria:

Geelong, Melbourne, Portland, Westernport.

Western Australia:

Albany, Broome, Bunbury, Carnarvon, Christmas Island, Dampier, Esperance, Fremantle, Geraldton, Port Hedland.

New South Wales Imperf Colour Trial Proofs



Printed by the New South Wales Government Printer from a background woodcut block and an embossing brass die [97] which was produced locally.



Green backing frame 33mm x 61mm

Design Embossed on thin card - Imperf

New South Wales Imperf Colour Trial Proofs



Green backing frame 33mm x 61mm
Design Embossed on thin card - Imperf

New South Wales Imperf Colour Trial Proof of Accepted Colour for the Port of Sydney



Green backing frame 33mm x 61mm Reverse / Horizontal Flip
Design Embossed on thin card - Imperf

1899 First Series First Issued 4 April 1899

35mm x 4mm Violet SPECIMEN

Issued Seals for the Port of Sydney



Green backing frame 33mm x 61mm

Specimen overprint prepared for inclusion into parliamentary presentation packs

Specimen copies recorded with or without clipped corner done as a further security measure on thin open wove paper



Issued Design Embossed - Perforation 12

Perforation 12

1899 First Series Second Issue

Imperf Proof of Accepted Colour for the Port of Newcastle and Issued Seal



Design Embossed on thin card - Imperf



Issued Design Embossed - Perforation 12

Green backing frame 33mm x 61mm

1901 Second Series First Issue

1901 Second Series Second Issue
Generic Key Plate

New South Wales - Newcastle



Diameter 37mm

NEWCASTLE

PORT OF NEWCASTLE

Lithographed - Perforation 12

1901 Second Series Third Issue
Generic Key Plate

New South Wales - Sydney



PORT OF SYDNEY

Lithographed - Perforation 12

Diameter 37mm

10

1901 Second Series Fourth and Fifth Issue

Generic Key Plate

Queensland - Brisbane and Thursday Island



Diameter 37mm

PORT OF BRISBANE

PORT OF THURSDAY ISLAND

Lithographed - Perforation 12

1901 Third Series First Issue

Victoria



Used Port of Melbourne

Two paper colours recorded for Victoria

Lithographed - Imperforate

1901 Third Series Second Issue

1901 Fourth Series First Issue

Western and South Australia



Used Port of Bunbury

'State of' Western Australia



Used Port Darwin

Lithographed - Imperforate

c1906 Fifth Series First Issue
Commonwealth

New South Wales - Norfolk Island

Used Seals have not
been sighted



Diameter 40mm - Box 38mm x 9mm
Lithographed - Gummed - Imperforate

1911 Sixth Series First Issue
Commonwealth

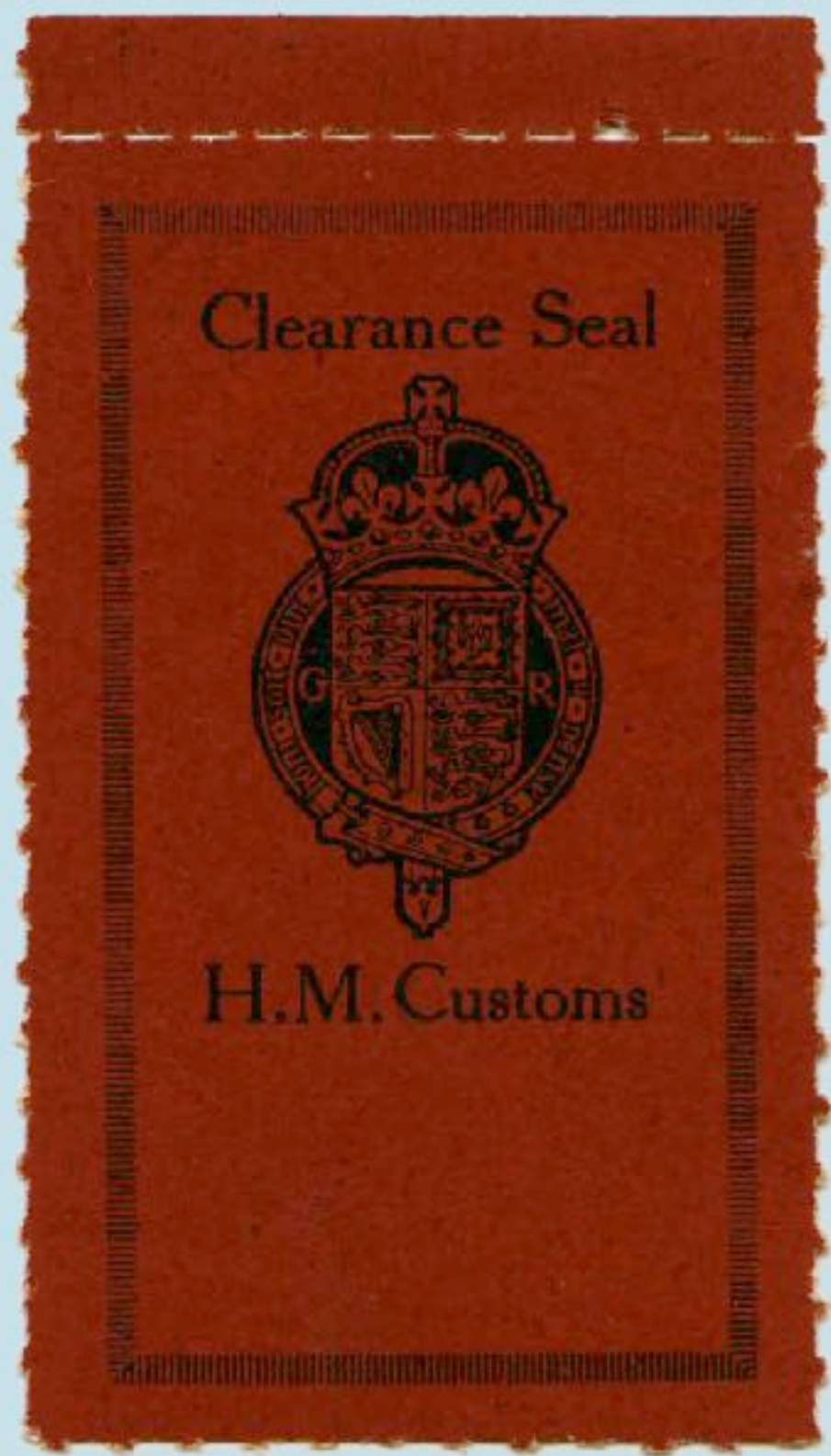


One Brandy Bottle Seal recorded

Diameter of red writing 56mm

Two Colour Lithographed - Imperforate

1923 Seventh Series First and Second Issue
Commonwealth - Generic Frame



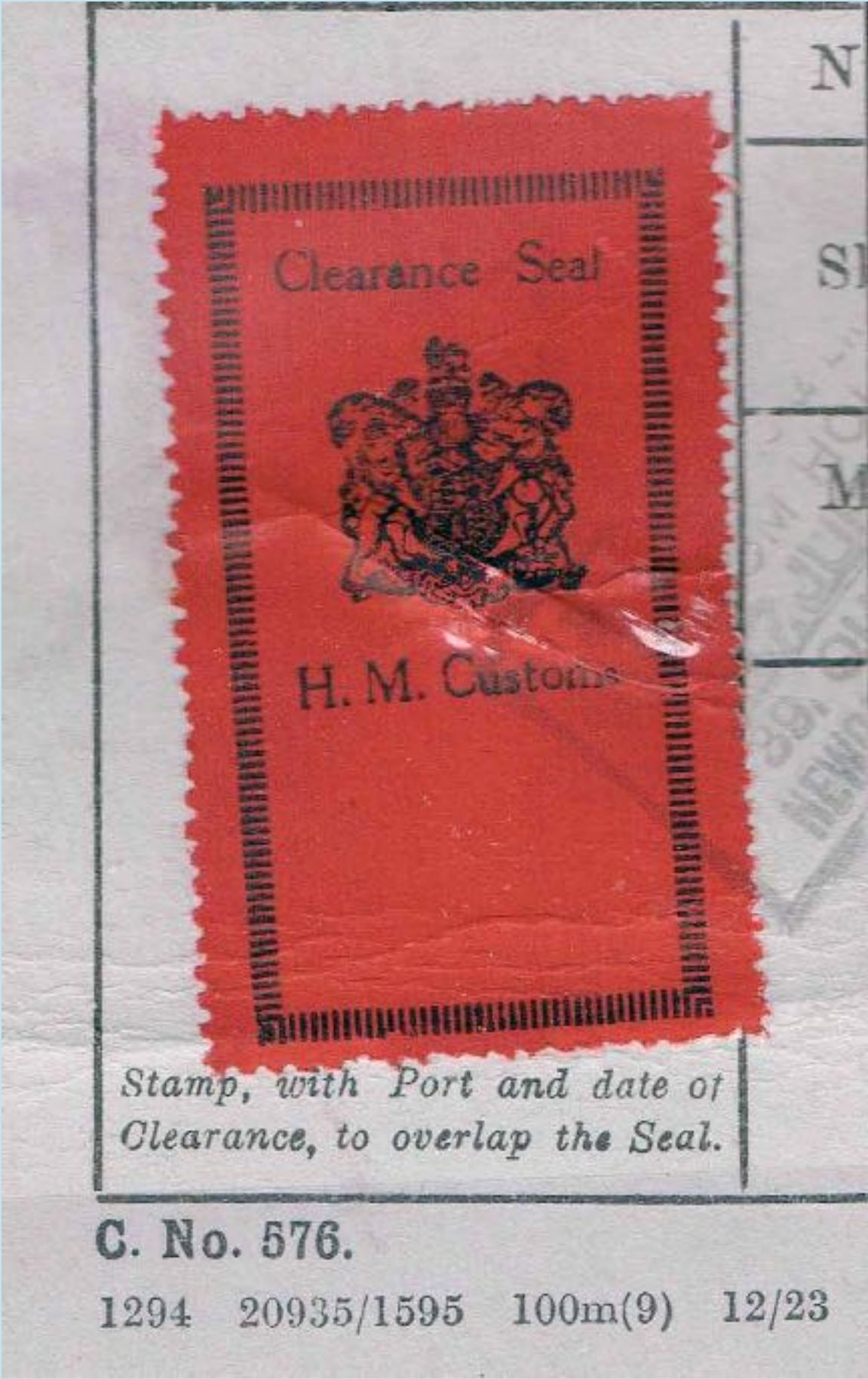
Two different
Coats of
Arms
Recorded

Roulette 6½
Full Gum

<—

—>

Perforation 12



Design 28mm x 52mm

Lithographed - Roulette and Perforated

Newcastle handstamp

1930 Eighth Series First Issue

New South Wales



Design 50mm x 32mm

Lithographed - Perforated

Acknowledgements

I would like to thank the following who assisted with some of the scans:

Ian Spencer [UK] : eBay

Bibliography

"Australian Stamp Archives" - 1987 - R Peck

"ozrevenues.com" 1996 Dave Elsmore RSRM

Other works by this author

"The 1901 King Edward VII Duty Stamp Adhesives" 2020 Dave Elsmore RSRM

"The 1878 & 1900 1d Stamp Duty of Queensland" 2019 Dave Elsmore RSRM

"The 1892 Duty Stamps of Queensland" 2019 Dave Elsmore RSRM

"The 1871-79 Lithographed Stamp Duty Adhesives of Queensland" 2019 Dave Elsmore RSRM

"The 1866-71 Lithographed Stamp Duty Adhesives of Queensland" 2016 Dave Elsmore RSRM

"Private Revenue Perfans of Australia" 2011 Dave Elsmore RSRM, David Coath

"Australia and New Zealand Revenue and Railway Fee Stamp Catalogue" 2008 Dave Elsmore RSRM

"The Impressed Duty Stamps of Victoria" 2006 Dave Elsmore RSRM, David Smith FAP

"Queensland Postal Notes 1880-1966" 2004 Dave Elsmore RSRM

"Local Carrier Stamps of Thomas Bryce & Co Brisbane" 1996 Dave Elsmore RSRM

"Queensland Railway Parcel Stamps" 1987 Dave Elsmore RSRM. "Queensland Revenue Proofs" 1988 Dave Elsmore RSRM



Brass Handstamp
30mm x 23mm