

DAHOMEY

Colonie française

1899-1905 : Timbres des colonies au type groupe



1



2



3



4



5



6



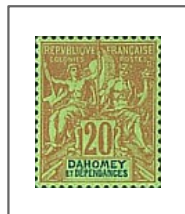
7



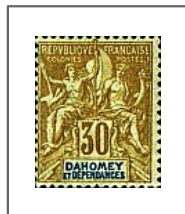
8



9



10



11



12



13



14



15



16



17

1912 : Timbres précédents, surchargés de nouvelles valeurs



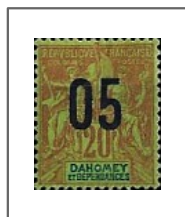
33



34



35



36



37



38



39



40



41



42

DAHOMEY

Colonie française

1906-07 : Série courante

Général Faidherbe



18



19



20



21



22

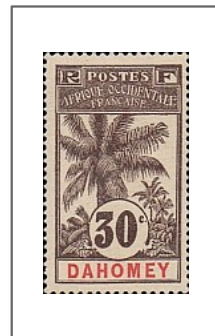
Palmiers



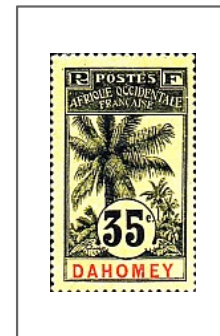
23



24



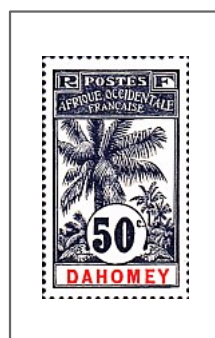
25



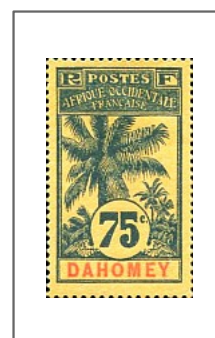
26



27

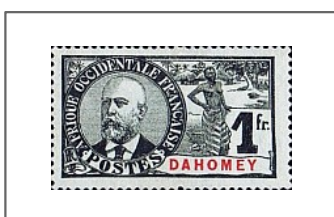


28



29

Gouverneur général Ballay



30



31



32

DAHOMÉY

Colonie française

1913-17 : Série courante, *nouveau type* : Cueillette des dates



43



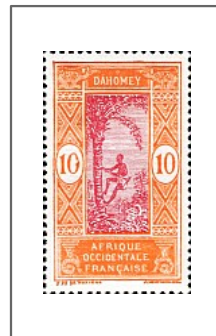
44



45



46



47



48



49



50



51



52



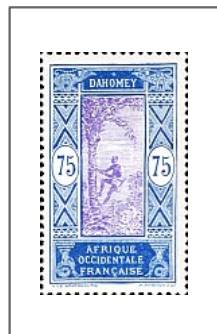
53



54



55



56



57

1915 : Croix-Rouge



58



59



60

DAHOMY

Colonie française

1922 : Série courante, *nouvelles couleurs*



61



62



63



64



65

1922-25 : Série courante, *surchargés*



66



67



68



69

1925-26 : Série courante, *nouvelles couleurs*



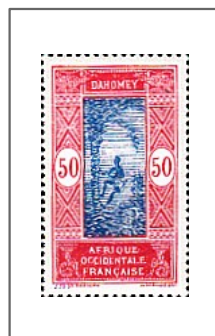
70



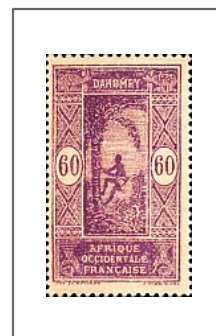
72



73



74



75



76



77



78

DAHOMÉY

Colonie française

1926-27 : Série courante, surchargés d'une nouvelle valeur



79



80



81



82



83



84

1927-39 : Série courante



85



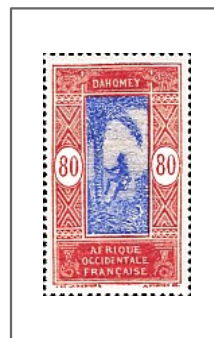
86



87



88



89



90



90A



91



92



93

DAHOMEY

Colonie française

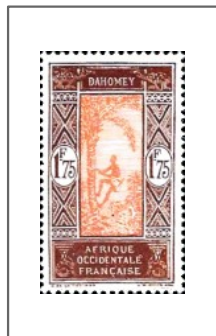
1927-39 : Série courante, (suite)



94



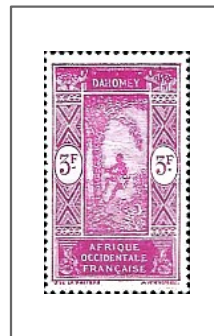
95



96



97



98

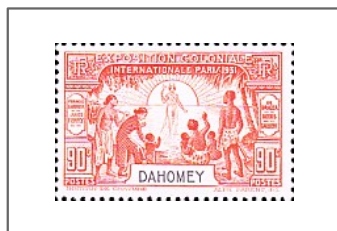
1931 : Exposition coloniale de Paris



99



100

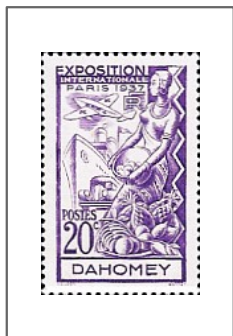


101

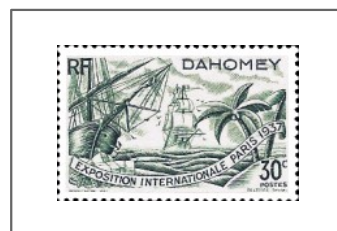


102

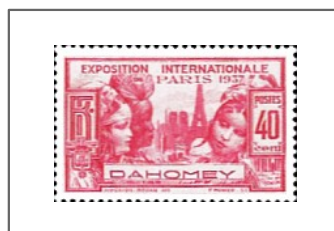
1937 : Exposition internationale de Paris



103



104



105



107



108

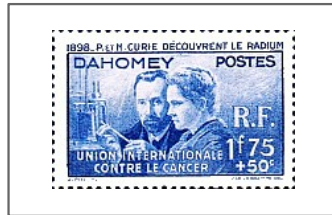


106

DAHOMÉY

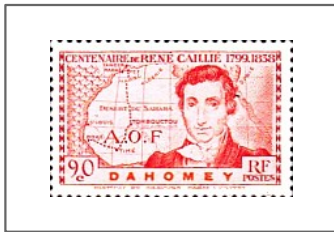
Colonie française

1938 : Pierre et Marie Curie

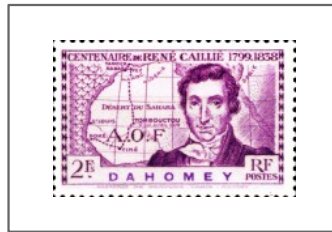


109

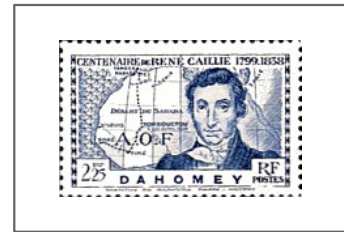
1939 : Centenaire de la mort de René Caillié



110



111



112

1939 : Exposition internationale de New-York

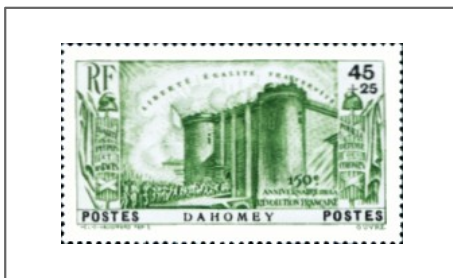


113

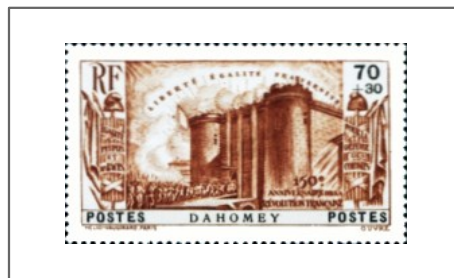


114

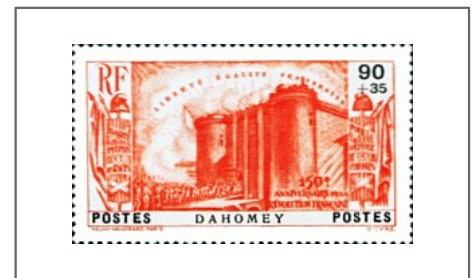
1939 : 150^e anniversaire de la révolution française



115



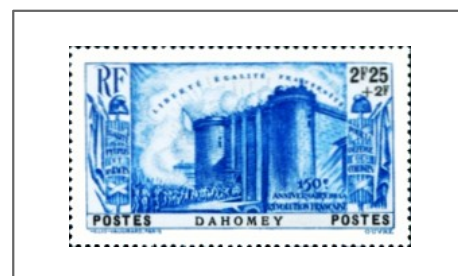
116



117



118



119

DAHOMÉY

Colonie française

1941 : Série courante, nouveaux types (Pirogue - Village lacustre - Lac Nokoué - Femme indigène)



120



121



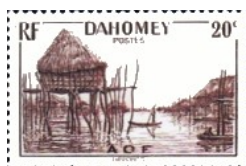
122



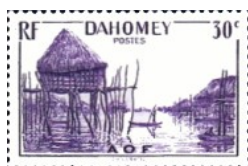
123



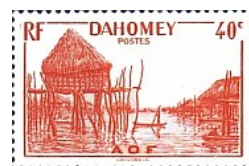
124



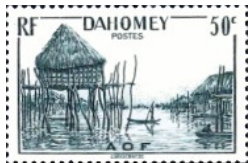
125



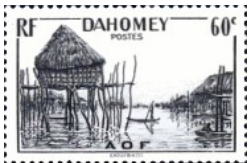
126



127



128



129



130



131



132



133



134



135



136



137



138



139



140



141

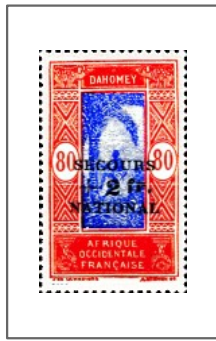
DAHOMY

Colonie française

1941 : Secours National



145



146

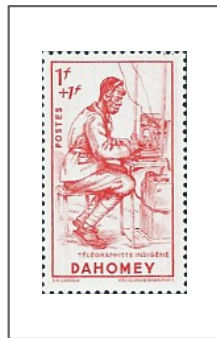


147

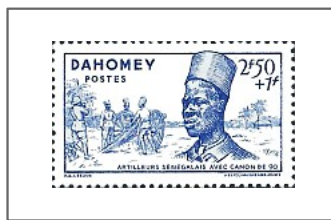


148

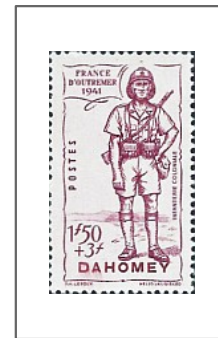
1941 : Défense de l'Empire



142

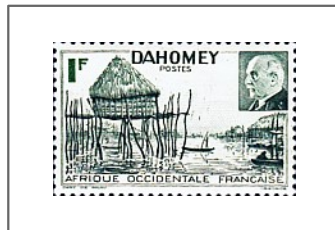


144

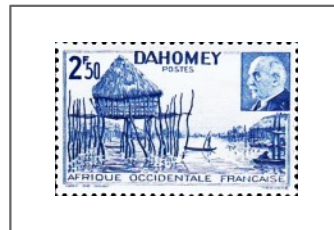


143

1941 : Village lacustre + Pétain

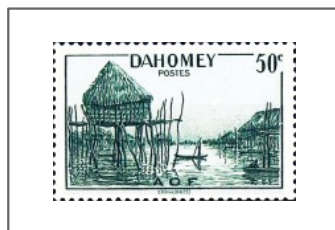


149

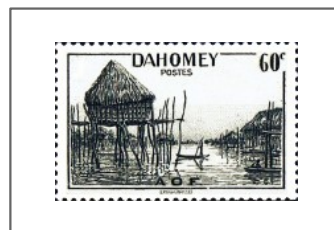


150

1944 : Village lacustre sans " RF "



151

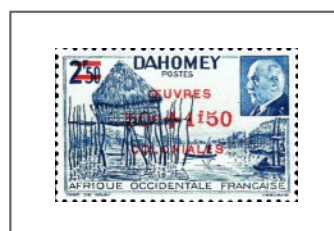


152

1944 : Village lacustre + Pétain, surchargé " ŒUVRES COLONIALES "



153



154

DAHOMEY

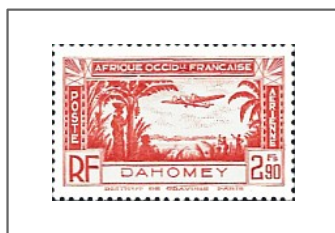
Colonie française

Poste aérienne

1940 : Avion survolant une palmeraie



1



2



3

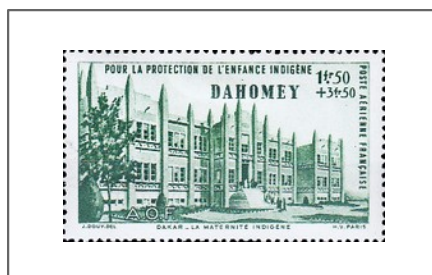


4

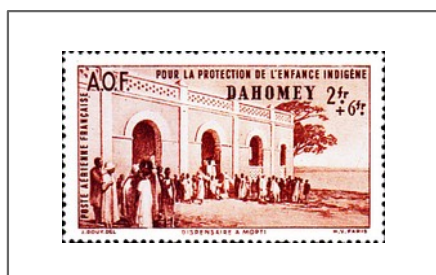


5

1942 : Œuvre de protection de l'enfance indigène et Quinzaine impériale



6



7



9



8

DAHOMEY

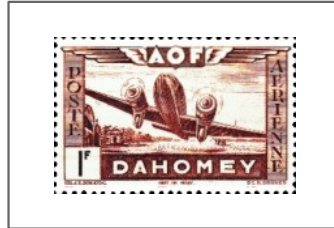
Colonie française

Poste aérienne

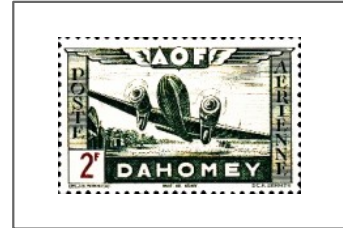
1942 : Avions survolant des paysages



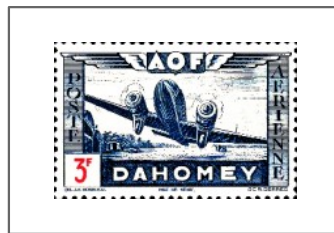
10



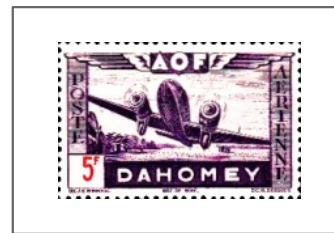
11



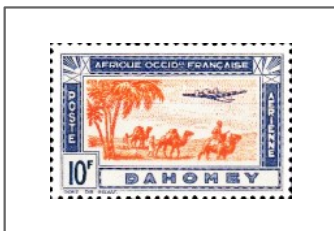
12



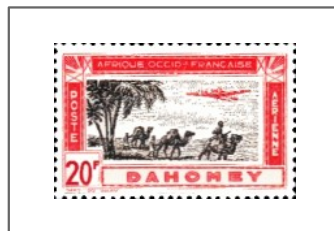
13



14



15



16



17

DAHOMÉY

Colonie française

Timbres-taxe

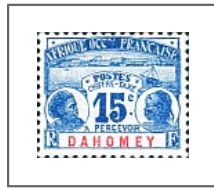
-- 1906 --



1



2



3



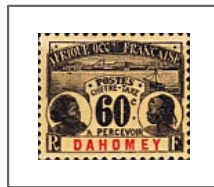
4



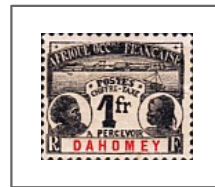
5



6



7



8

-- 1914 --



9



10



11



12



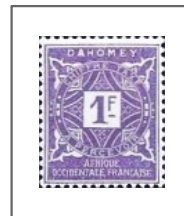
13



14



15



16

-- 1927 : Surchargés --



17



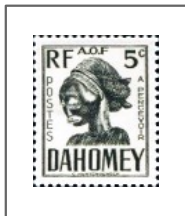
18

DAHOMEY

Colonie française

Timbres-taxe

-- 1941 : Nouveau type --



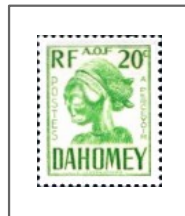
19



20



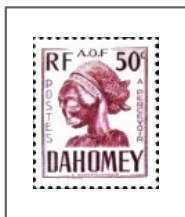
21



22



23



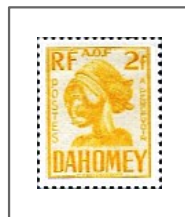
24



25



26



27



28

-- 1943-44 : Sans " RF " --



29



30



31

DAHOMÉY
Colonie française

DAHOMÉY

Colonie française